

# Supra Stairlift with Platform



ThyssenKrupp

# Thyssen Supra is the platform geared up to assist the Handicapped and the Elderly in the inclined travel of stairs...

## Technical Characteristics

Maximum Load	⇒ 250 kg	
Translation speed	⇒ 7 cm/s	⇒ 13 cm/s
Max rail length	⇒ 40 m	
Maximum gradient	⇒ 45°	
Minimum bending radius	⇒ 180 mm	
Rail specification	⇒ Aluminium extruded	
Drive system	⇒ Rack and pinion	

## Platform Characteristics

Folding System	⇒ Manual & Automatic
Platform Length (min)	⇒ 860 mm
Platform Length (max)	⇒ 1050 mm
Platform Width (min)	⇒ 500
Platform Width (max)	⇒ 850
Barrier arm	⇒ Manual & Automatic
Access flap	⇒ Automatic
Long Side Access	⇒ Automatic (optional)
Fold up Seat	⇒ Manual (optional)

## Design Characteristics

- ⇒ Good Looking
- ⇒ Modern style
- ⇒ Easy to integrate in any environment
- ⇒ Rail pleasant to touch
- ⇒ Rail in varnished aluminium (no rust)
- ⇒ Platform in aluminium
- ⇒ Tested for over 50.000 cycles
- ⇒ Low maintenance
- ⇒ Very reliable

## Performance Characteristics

- ⇒ Maximum travel 40 m
- ⇒ Load capacity 250 kg (under 30°)
- ⇒ Rail mechanically jointed
- ⇒ Rail can be used as handrail
- ⇒ User command by radio, infrared, cable – can be also used as remote control
- ⇒ Programmable logic on the main board
- ⇒ Since its production in 2002, more than 500 Supra had been sold

## Certifications

- ⇒ CE
- ⇒ EC Type Examination Certificate N°CV002/03  
by TÜV Italia Cinisello Balsamo Italy
- ⇒ Certification for the overspeed governor and safety Gear N°FV 701 / GB 210  
by TÜV Sddeutschland Munchen Germany

# Thyssen Supra References...

## In Houses





## Thyssen Supra References...

### In Railway Stations



Supra is installed in about 20 Railway Stations



## Thyssen Supra References...

### In Public Buildings



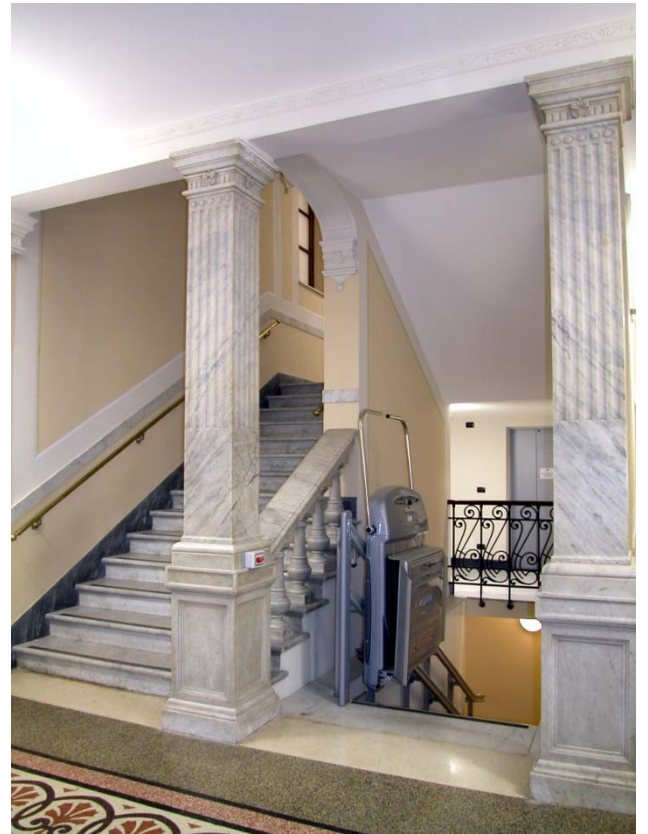
Supra is installed in many National Monuments, Museums and Public Buildings





# Thyssen Supra References...

## In Public Buildings



## Thyssen Supra References...

### In Venice - Italy



In Venice, 18 Supra are installed over historical bridges;  
in an extremely aggressive environment: Salty sea water, rain, dust.





## Thyssen Supra References...

In Venice - Italy

